

COLORTEC® finish

water-based sealer for concrete surfaces

matt (invisible) finish · water- and dirt-repellent · food safe

Fields of application:

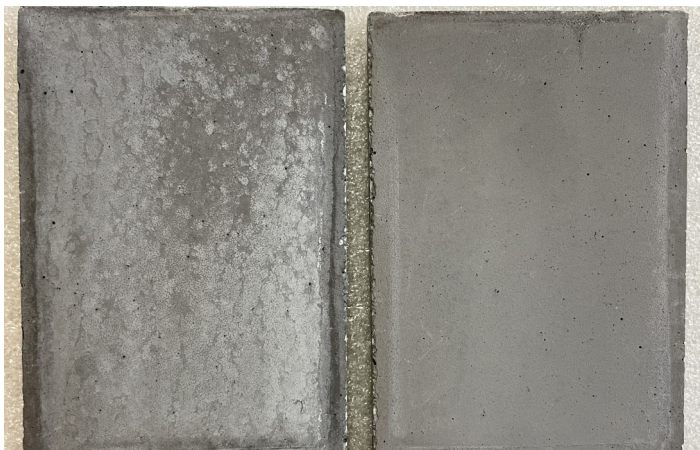
COLORTEC® finish was especially developed for application on smooth, form-finished or formliner-textured concrete but it can also be used for concrete with surface finishes like sandblast, exposed-aggregate, acid-etched ...

COLORTEC® finish is used for the protection of concrete surfaces which need to fulfill high architectural and aesthetical requirements and therefore require protection against weathering and pollution. This may be walls and facades, indoor and outdoors, made of prefabricated concrete, glassfibre concrete, ready-mixed concrete and other.

COLORTEC® finish creates a water-repelling effect and protects the concrete surface against dirt, efflorescence, frost, weathering, fading of the colours and other effects ...

COLORTEC® finish does not add a sheen or glossy look to the surface.

Lately COLORTEC® finish also gained popularity amongst makers of DIY concrete, cement & gypsum based crafts.



Left: not protected

Right: protected with COLORTEC® finish

Foto shows concrete surfaces after long time of outdoor weathering

Product characteristics:

- solvent-free
- water- and dirt repellent
- invisible, matt finish
- safe and easy to apply
- alkaline-resistant
- applicable on moist and dry surfaces
- uv-resistant
- breathable
- safe for contact with food according to Bureau Veritas test report

Advantages:

- protects against efflorescence
- protects against weathering and aging effects
- increases freeze resistance
- protects against fading of concrete colour
- no special tools necessary for application
- long durability
- user friendly
- food safe
- suitable also for DIY concrete, cement & gypsum based crafts
- thermal stability of around +350°C

Instructions for application:

Certain standard precautions and application routines should always be considered when handling chemicals (e.g. no eating, drinking, or smoking at the place of work). Additional instructions, which can be found on the corresponding product labelling and in the Safety Data Sheet, must be observed. If you do not have a copy of the current Safety Data Sheet at hand we will be pleased to send you one.

Prior to application the concrete surface should be dry, absorbent, clean and frost-free.

COLORTEC® finish can be applied early, a few days after demoulding, if tested appropriately prior to application. Due to the existing and constantly advancing diversity of the types of concretes used, resp. their production processes, ingredients, release agents etc. the ideal time for application must be determined in pilot tests for each project, for example in order to check if residue of mould release agents or curing agents avoid the penetration of COLORTEC® finish, which could then lead to stains. These aspects are usually of minor relevance if COLORTEC® finish is chosen to protect concrete surfaces, which have already reached their final strength.

COLORTEC® finish can be applied to vertical or horizontal surfaces with a roller or a suitable sprayer in a generous, one-coat application. By vertical surfaces we recommend the application in a zigzag form, starting at the bottom and working upwards.

More pictures and videos of concrete surfaces with "repelling" effects can be found in our online [photo gallery](#) and [video gallery](#).



Concrete protected with COLORTEC® finish



Consumption:

Depending on the absorbency of the surface approx. 120 gr/sqm.

Packaging:

0,5 - 1 - 5 - 10 - 30 - 120 - 200 - 1.000 Ltr
bottle/pail/drum/IBC container

Storage:

Store inside a suitable warehouse (not outdoors).

Can be stored for approx. 12 months in closed original container. Protect against frost.

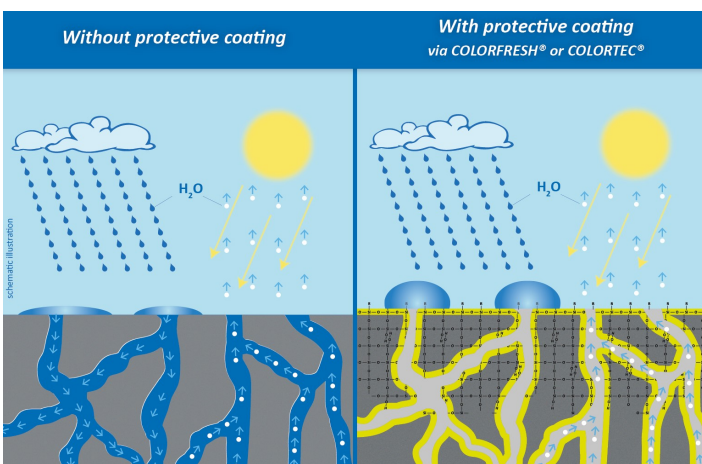
ENQUIRY

The surface to be treated should be dry. If working outdoors it should not rain immediately prior, during or immediately after application.

If applied onto "old" concrete surfaces, the concrete surface must be cleaned thoroughly beforehand so that no residue remains. If a cleaning agent is necessary we recommend the application of [HEBAU CEMCLEAN](#) (see instructions for application in the technical information sheet, pilot tests necessary).

After the application the treated surfaces should be initially kept dry and frost-free for at least for 24 hours. The drying time of **COLORTEC® finish** takes approx. 24 hours and approx. 7 days until **COLORTEC® finish** will reach its full performance.

The durability of the **COLORTEC® finish** depends on a large number of parameters (concrete mix design and surface



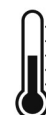
Detailed explanation in our brochure "[surface protection](#)"

specifics, application, weather ...) but usually lies between 2 and 10 years. If a fading of the protective effect is noticed, we recommend the cleaning and subsequent re-coating of the surface with **COLORTEC® finish**.

! Please note, that it is always necessary to carry out pilot tests which realistically correspond to the planned production process and application procedure. When applying to outdoor surfaces, testing should also take the natural



According to Bureau Veritas sensorik test report **COLORTEC® finish** is safe for contact with food, e.g. on countertops and can be labelled accordingly.



The product has a thermal stability of around +350°C after being applied and dried.

General information:

Possible cross reactions with potential residues of mould release agents or curing agents on the concrete surface must be checked in pilot tests under real production conditions, i.e. in process and handling, the original concrete mix design and conclusive outdoor weathering, including exposure to rain and snow. Latest scientific studies in cooperation with the Fachvereinigung Deutsche Betonfertigteile FDB e.V. (German association for precast concrete elements) confirm a direct connection between the protective coating, the type of release agent used and a later discolouration of the concrete surface, which can be avoided through the application of a suitable release agent. For more information, please contact our technical consultants.

The concrete surface to be protected should not contain any water-repellent additives/admixtures, or be otherwise modified in a way which will reduce the absorbency of the surface. Please check that any used additives or admixtures do not have these functions.

Do not apply by ambient or concrete surface temperatures below +10°C.

Please consider also our products **COLORFRESH® intensiv**, **COLORFRESH® effect** or **COLORTEC® MAX** especially for the protection of concrete with a special surface finish, e.g. polished, sand-blasted, exposed-aggregate, acid-etched ...

Legal notice:

The technical information contained herein, in particular relating to the function, use and handling of our products, is given to the best of our knowledge and is based on our present knowledge and experience of the products when appropriately stored and handled, and applied under normal conditions in accordance with the standard fields of application, as described in page 1. Due to the large variety of possible use and application scenarios, this data sheet raises no claim to completeness, but is solely intended to provide a non-binding decision support, which needs to be reconfirmed by the end-user through pilot tests. Pilot tests are always necessary and should be carried out following the advice given in the current Product Data Sheet and under realistic practical conditions, i.e. conditions must realistically correspond to the planned production process and application procedure. Case-related acquired knowledge is not directly transferable to similar applications. Product specifications are subject to alterations without notice.

Only the most recent issue of the Product Data Sheet is valid, which will be supplied on request or can be found on our website under www.hebau.de. Illustrations in our data sheets, brochures etc. are merely exemplary and not binding. Photos may have been edited.

We guarantee for the perfect quality of our material according to our specifications. We do not take any liability resp. warranty for the desired end result, as we solely act as supplier of the products and the application of the products and other influencing factors are beyond our control and our field of responsibility.

Our General Terms and Conditions apply.

COLORTEC® finish CTR

Hazard + precautionary statements according to CLP regulation / (EC) No 1272/2008

The product is not classified according to the CLP regulation (Classification, Labeling and Packaging). Usual precautions and actions when handling chemicals should be observed. Please observe the Safety Data Sheet

Precautionary statements

P260 Do not breathe spray.
P403+P233 Store in a well-ventilated place. Keep container tightly closed.
P501 Dispose of contents/container in accordance with local regulations.

ENQUIRY

Our sealers and how they compare:

	COLORFRESH® intensiv protective coating	COLORFRESH® effect protective coating	COLORTEC® MAX protective coating	COLORTEC® finish protective coating	PROWALL II anti-graffiti-coating and stain blocker
--	---	---	--	---	--

Areas of application:

floors/paving	✓	✓	✓	✓	-
walls/facades	✓	✓	✓	✓	✓
decoration and design	✓	✓	✓	✓	✓
indoors	✓	✓	✓	✓	✓
outdoors	✓	✓	✓	✓	✓

Suitable for following types of concrete:

prefabricated (precast) elements	✓	✓	✓	✓	✓
ready mixed concrete (cast-in-place)	✓	O	O	✓	✓
wetcast and self-compacting (self-levelling) concrete	✓	✓	✓	✓	✓
dry-cast concrete (pavers, blocks, bricks, slabs, tiles ...)	✓	✓	✓	✓	✓
glassfibre reinforced concrete (GFRC)	✓	✓	✓	✓	✓
concrete used for city furniture and landscaping	✓	✓	✓	✓	✓
terrazzo and decorative concrete floors and pavings	✓	✓	✓	✓	O
DIY concrete, cement & gypsum based crafts	✓	✓	✓	✓	✓

Suitable for following types of surface:

smooth, form-finish or formliner-structured	✓	O	O	✓	✓
acid-etched	✓	✓	✓	✓	✓
sand-blasted / shot-blasted	✓	✓	✓	✓	✓
exposed-aggregate	✓	✓	✓	✓	✓
bush-hammered	✓	✓	✓	✓	✓
polished / ground / honed	✓	✓	✓	✓	✓

Product characteristics:

matt (invisible) finish	✓	✓	✓	✓	✓
colour-enhancing	✓	✓✓	-	-	-
creates a silky sheen	✓	-	-	-	-
water-based / solvent-free	✓	✓	✓	✓	✓
breathable / permits water vapour diffusion	✓	✓	✓	✓	O
water-repellent / hydrophobic	✓	✓	✓	✓	✓
dirt-repellent	✓✓	✓	✓	✓	✓✓
oil-repellent / oleophobic	✓	✓	✓	-	✓
uv-resistant	✓	✓	✓	✓	✓
free of SVHCs and free of microplastics	✓	✓	✓	✓	✓
free of PFAS	✓	✓	-	✓	✓
free of PFOA/PFOS	✓	✓	✓	✓	✓
tested and approved as safe for contact with food	✓	not yet tested	✓	✓	✓
thermal stability	around +150°C	around +150°C	not yet evaluated	around +350°C	at least +60°C
applicable on dry surfaces	✓	✓	✓	✓	✓
applicable on moist surfaces	✓	✓	✓	✓	-

Protects against:

efflorescence	✓	✓	✓	✓	-
freeze- / thaw damage	✓	✓	✓	✓	✓
food stains	✓	✓	✓	O	✓
general soiling	✓	✓	✓	✓	✓
growth of moss and algae	✓	✓	✓	✓	✓
weathering, damage, fading of colours	✓	✓	✓	✓	✓
graffiti	-	-	O	-	✓