

High-performance mould release agent for smooth, form-finished concrete



The photo above shows an example of a concrete surface produced in a structured formliner by using WABICON HP as mould release agent.

Fields of application:

WABICON HP is suitable for all users and decision makers, who are open to considering changes towards new, environmentally friendly production standards, because **WABICON HP** has been especially designed to replace solvent- or mineral-oil-based release agents.

Compared to conventional mould release oils with a consumption rate of approx. 20 m² per litre, **WABICON HP** achieves a much better efficiency rate in terms of cost per m² with approx. 50 to 100 m² coverage per litre, combined with better results and without exposing the workplace to mineral oils and solvents!!

The high quality active ingredients and the physical separating film make **WABICON HP** suitable for all types of steel-, wood-, rubber and plastic moulds. **WABICON HP** is used both in rough construction site operations, as well as in precast concrete plants, wherever it is necessary to produce an immaculate, non-porous, fair-faced concrete surface. Providing it is applied economically, no decline in the adhesion of plaster, paint, wallpaper paste etc. is to be expected. However, should protective coatings need to be applied onto the smooth, form-finished concrete surfaces made by using **WABICON HP** as the release agent, please consider pilot test to find out about compatibility (applies for all protective coatings in general).

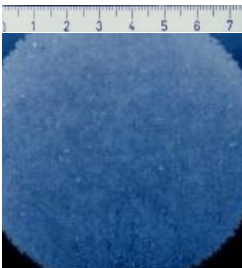
General information about release agents can be found in the brochure

["RELEASE AGENTS FOR SMOOTH, FAIR-FACED CONCRETE"](#)

Advantages in application:

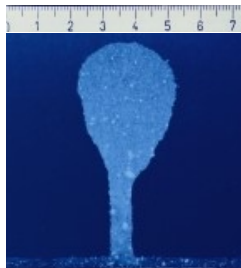
Due to the good separation effect, an immaculate, fair-faced smooth form-finished or formliner-textured concrete is created after demoulding. If steel moulds are used the anti-corrosion ingredients inside **WABICON HP** prevent the formation of rust stains on the steel and prolong durability. The application of **WABICON HP** reduces mould cleaning time to a minimum. Due to the thin separation layer, **WABICON HP** has an extremely low consumption rate per m² and is therefore very economical to use. **WABICON HP** can be easily applied with standard sprayers. However in order to reduce consumption, we recommend the use of a suitable nozzle size (recommended: 0.3mm). On request **HEBAU** can offer sprayers which have been tested and pre-configured accordingly for the application of **WABICON HP**.

For environmental reasons **WABICON HP** has been developed without the use of solvents or mineral oils, but at the same time ensuring no disadvantages in the quality of the concrete separation, the concrete surface or the cleaning of the mould. Therefore **WABICON HP** is not a hazardous material and is biodegradable.



HEBAU High-performance release agent

Application rate of 80 µ, horizontal application, erecting into vertical position after drying time of 5 min. Coverage rate after drying: approx. 44 cm². No dripping!



Low-budget demoulding oil

Application rate of 80 µ horizontal application; erecting into vertical position after a drying time of 5 min. Coverage rate after drying: approx. 4 cm². Extreme dripping!

Instructions for use:

Usual precautions and actions when handling chemicals should be observed (e.g. no eating, drinking, or smoking at the place of work). Additional instructions found on the corresponding product labelling or in the Safety Data Sheet, must be observed. If you do not have a copy of the current Safety Data Sheet, we will be pleased to send you one.

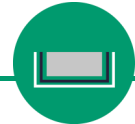
Stir product well before use, especially after longer storage.

WABICON HP is usually applied to the mould in a thin, uniform layer with a sprayer (nozzle approx. 0.3 mm). We recommend our [HEBAU Sprayer](#). It is important to ensure, that all parts of the mould, especially those which are difficult to access, are sprayed carefully. Overspray material or puddles should be removed from the mould with a cloth (which has been previously moistened with **WABICON HP**). The general rule "the lower the consumption, the better the concrete surface" should be considered during application. The concrete may be poured into the mould as soon the **WABICON HP** has dried. Drying time is usually between 5 and 15 minutes, depending on applied quantity, the absorbency of the formwork, ambient temperature resp. humidity. For mould care it is recommended to clean the moulds and to reapply **WABICON HP** immediately after demoulding, especially steel moulds.

- For the overseas export, WABICON HP is also available as a concentrate. The concentrate is 1: 1 miscible with distilled water.



Please note, that it is always necessary to carry out pilot tests which realistically correspond to the planned production process and application procedure.



Product description:

WABICON HP is a biodegradable, solvent- and mineral oil-free mould release agent for the production of immaculate, non-porous concrete surfaces with a built-in corrosion protection for steel moulds. After drying, a release film is formed, which prevents the adhesion of the concrete to the mould and allows for the production of a smooth, pore-free, stain-free and dust-free concrete surface. **WABICON HP** combines the latest technology with the practical experience we have gathered over the last 30-years of experience in the field of mould release agents for smooth, form-finished concrete.

Consumption:

Depending on the absorbency of the mould surface:
1 litre for approx. 50—100 sqm.

Packaging:

30-200-1000 liter - pail/barrel/IBC

Storage:

Store inside a suitable warehouse (not outdoors).

Store frost-free (above + 5°C). Protect against sunlight. Can be stored for approx. 12 months in closed, original packing.

Enquiry

Legal notice:

The technical information contained herein, in particular relating to the function, use and handling of our products, is given to the best of our knowledge and is based on our present knowledge and experience of the products when appropriately stored and handled, and applied under normal conditions in accordance with the standard fields of application, as described in page 1. Due to the large variety of possible use and application scenarios, this data sheet raises no claim to completeness, but is solely intended to provide a non-binding decision support, which needs to be reconfirmed by the end-user through pilot tests. Pilot tests are always necessary and should be carried out following the advice given in the current Product Data Sheet and under realistic practical conditions, i.e. conditions must realistically correspond to the planned production process and application procedure. Case-related acquired knowledge is not directly transferable to similar applications. Product specifications are subject to alterations without notice.

Only the most recent issue of the Product Data Sheet is valid, which will be supplied on request or can be found on our website under www.hebau.de. Illustrations in our data sheets, brochures etc. are merely exemplary and not binding. Photos may have been edited.

We guarantee for the perfect quality of our material according to our specifications. We do not take any liability resp. warranty for the desired end result, as we solely act as supplier of the products and the application of the products and other influencing factors are beyond our control and our field of responsibility.

Our General Terms and Conditions apply. This information is valid for professional users. Our products are not recommended for private end-users.

Hazard + precautionary statements according to CLP regulation / (EC) No 1272/2008



Danger

Hazard statements

H304 May be fatal if swallowed and enters airways

Precautionary statements

P301 IF SWALLOWED:
P310 Immediately call a POISON CENTER or doctor/physician.
P331 Do NOT induce vomiting.
P405 Store locked up.